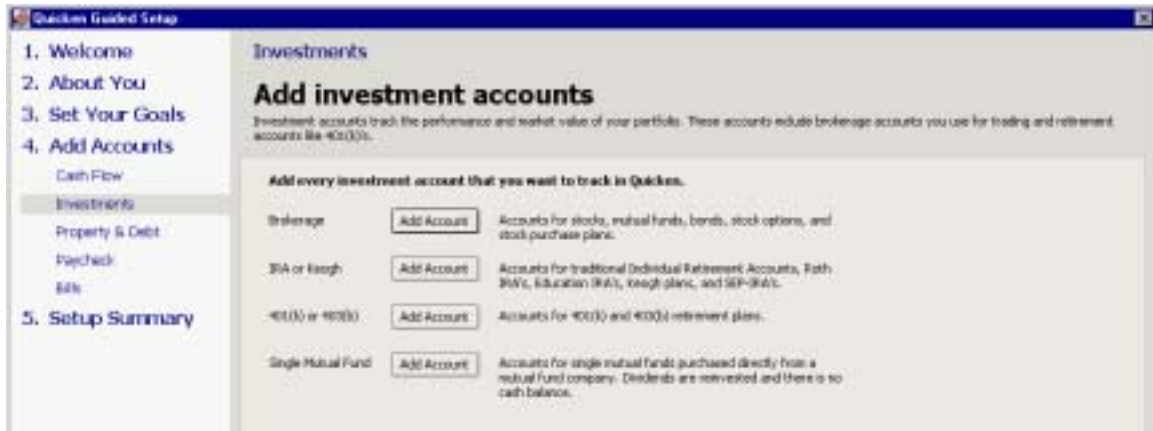


## Set Up Instructions for Quicken 2003 Deluxe

Once Quicken is installed; Select the “**Set Up**” Icon in the Toolbar

Go to “**4. Add Accounts**” and Select “**Investments**”

Select the “**Add Account Tab**” next to “**401(k) or 403(b)**”

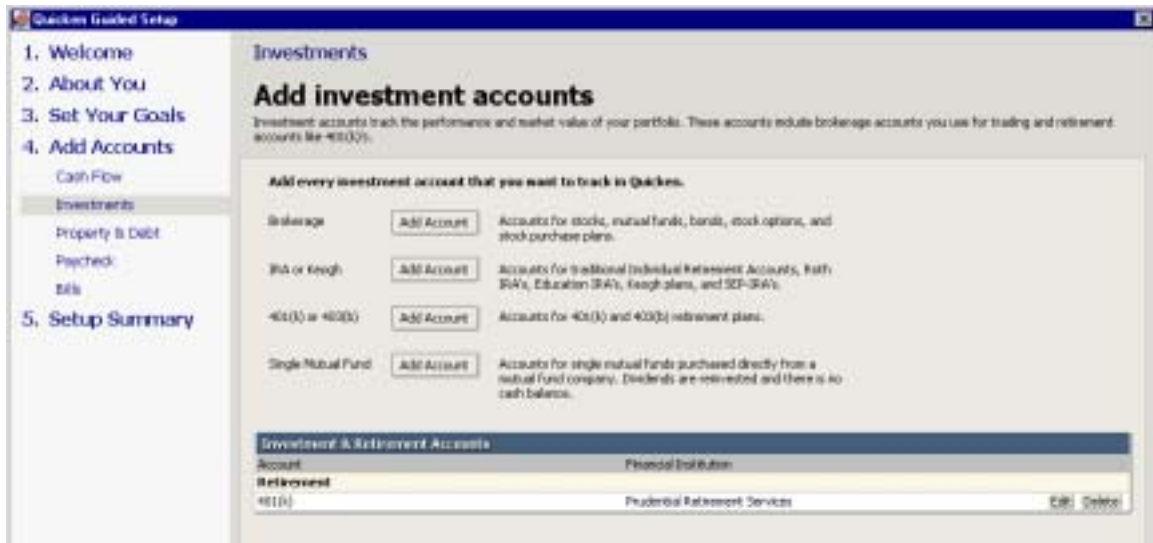


In the “Add Investment Accounts” box insert the **Name of the account** and select **Prudential Retirement Services** from the Financial Institution drop box list and click **Next**.

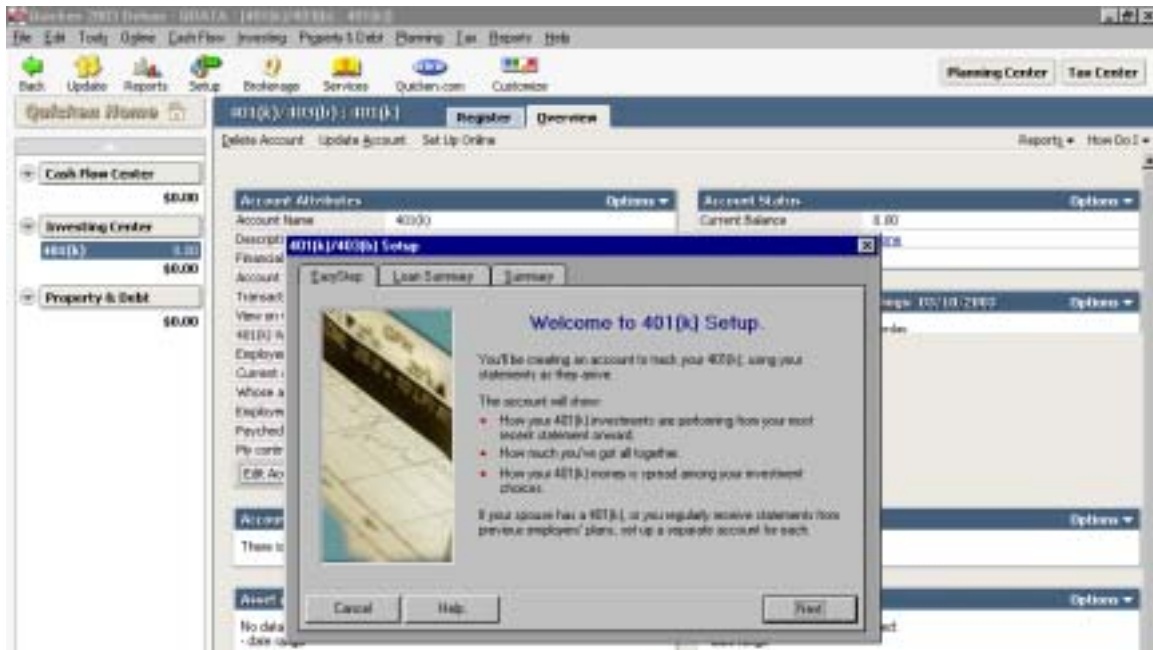


Review your information in the “Investment Account Summary”, if correct select **Done**, if not select **Back** and do over.

The account will appear. To the right of the screen, select the “**Edit**” function in the Retirement account section.



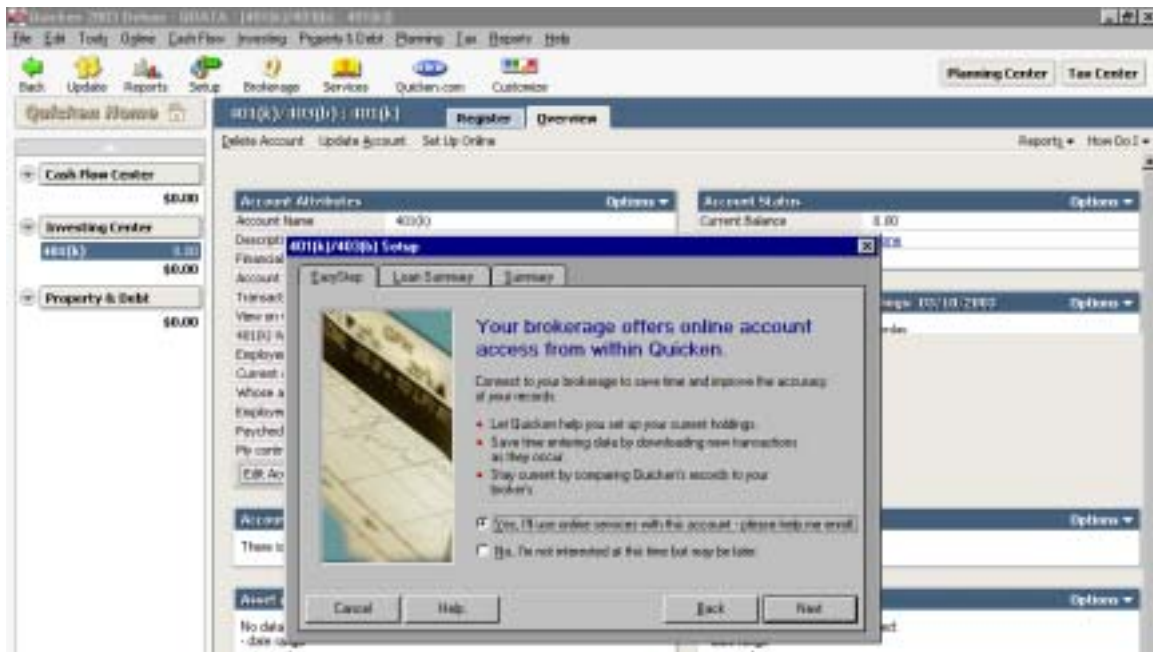
Click **Next** to continue with your account set up.



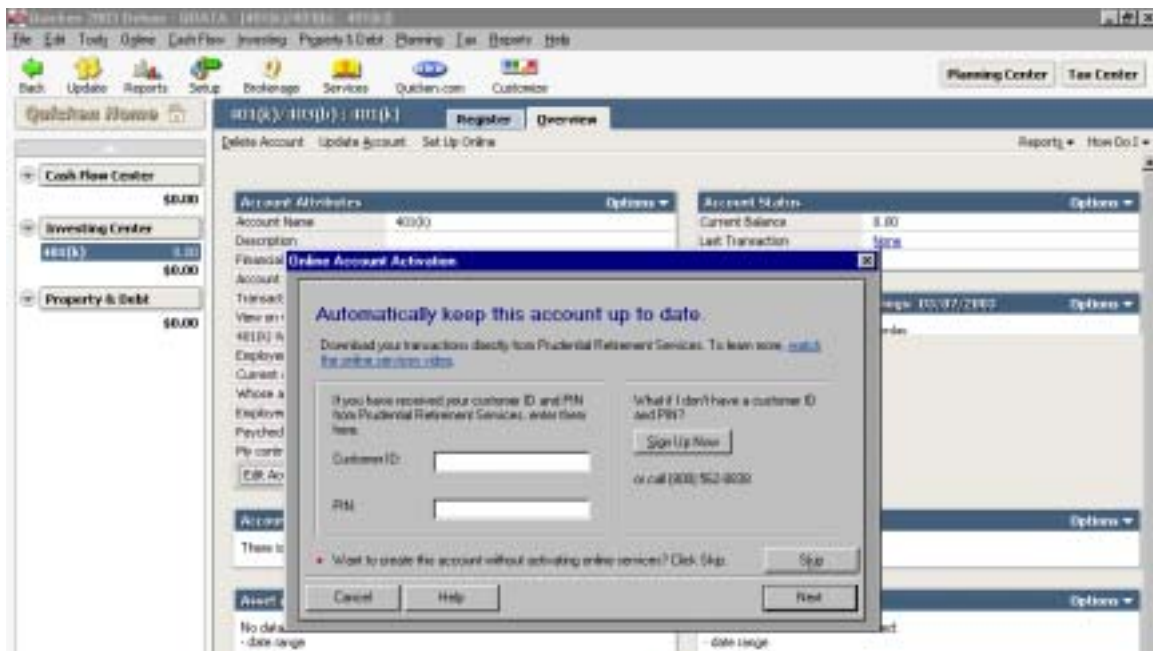
Complete the additional information page and click **Next**.

Complete the Loan information page and select **Next**.

When prompted with the “Your brokerage offers online account access from within Quicken”, select “Yes, I’ll use online services with this account- please help me enroll.” and click **Next**.



Enter your “**Customer ID**” which is the account number found on your quarterly account statement along with your “**PIN**” and click **Next**.



Enter your **Quicken Account Number** in this format: **ppppppX000000Xnnnn**.  
Click **Next**.

“**pppppp**” is your four-to six- digit plan number. It is located at either the top or bottom of the first page of your statement. Please disregard the extra spaces if there are no zeros in front of the number. If there are zeros in front of the number, **be sure to include them**.  
**(See example below)**

“**X**” is the upper case letter X and must be included. (See example below)

For “**000000**” enter either:

- Your six-digit sub-plan number (if you have one). (See example below.)  
The sub-plan number should be at the very bottom of the first page of your statement.
- If you do not have one, enter **000000**. (See example below)

*If you are unsure about your subplan number, contact the person at your company who administers your plan. You may also contact Prudential Retirement Services at the toll-free number listed on your statement for additional information.*

“**X**” is the upper case letter X and must be included. (See example below.)

“nnnn” is the last four numbers of your Account number. (See example below.)

**Examples:**

Plan number: 004545

**Sub-plan number:** 304545

Account number: 123-45-6789

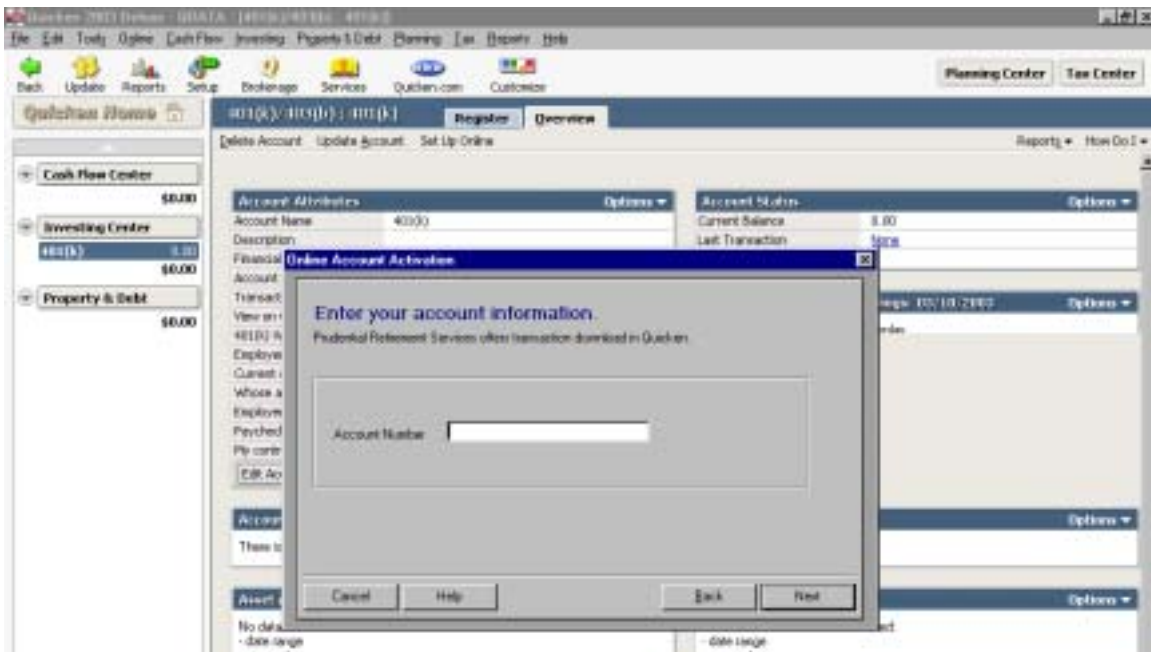
Quicken account number: 004545X304545X6789

Plan number: 4545

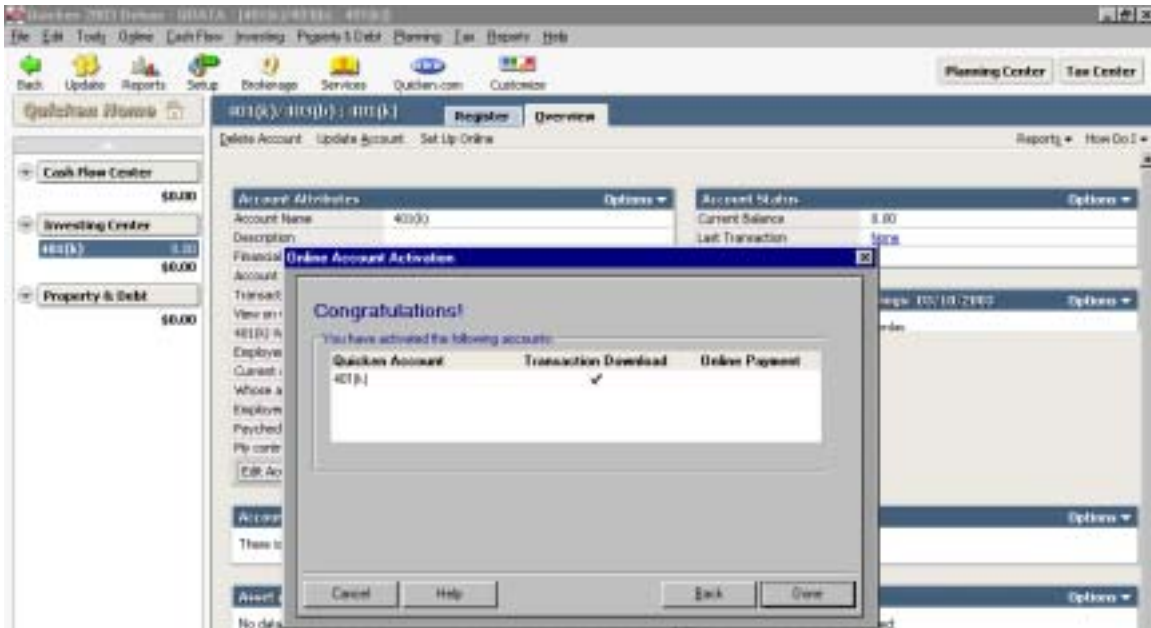
**No sub-plan number**

Account number: 123-45-6789

Quicken account number: 4545X000000X6789.



Click **Done**.



In the left margin, select **Update**. **Check** your account, enter your **PIN**, and click **Done**.

